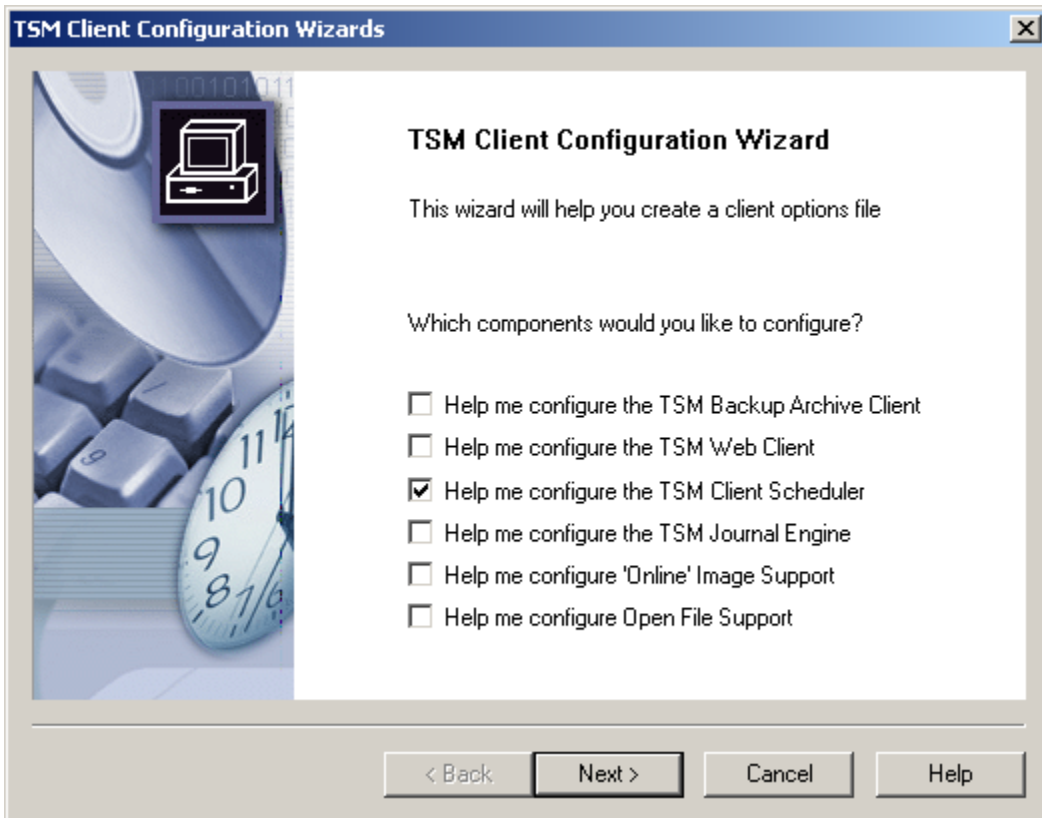
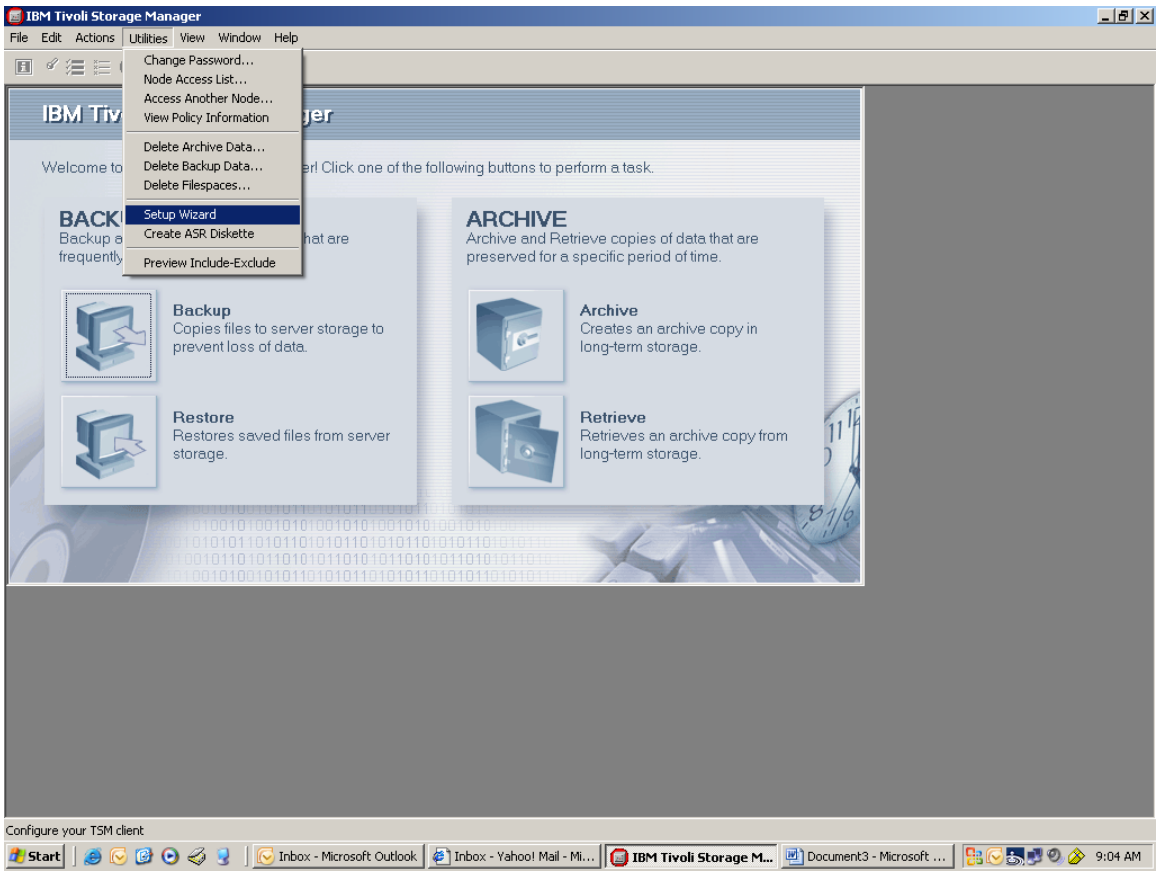


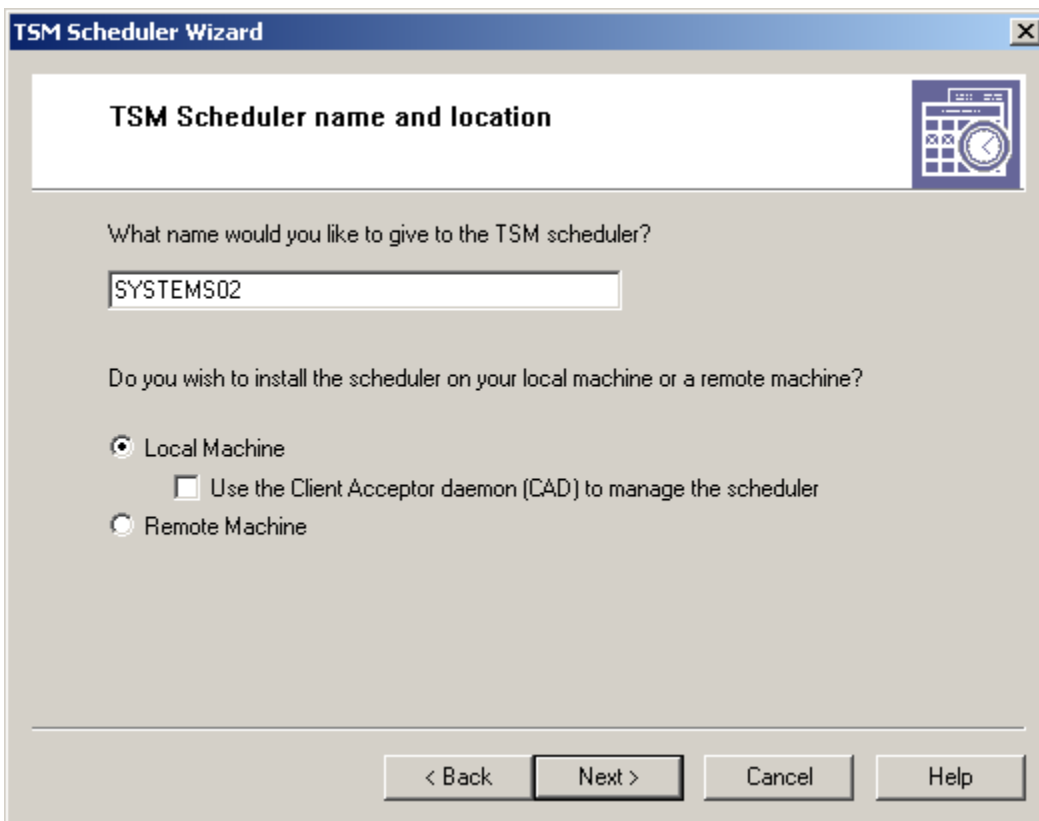
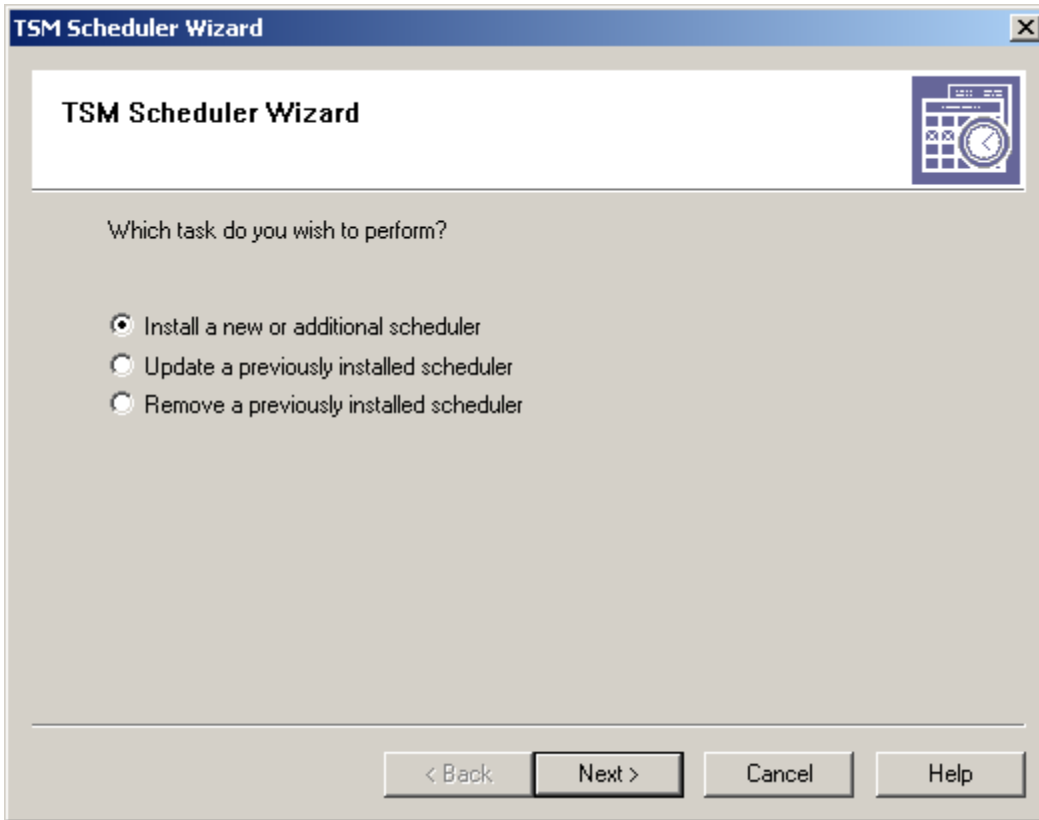


User must follow the path to locate and Launch Tivoli Storage Manager.

Click Start>All Programs>Tivoli Storage Manager>Backup Archive GUI.

Once opened, follow instructions below:





TSM Scheduler Wizard [X]

Option file name and location

Specify the option file that TSM should use

< Back Next > Cancel Help

TSM Scheduler Wizard [X]

TSM authentication

What is the TSM node name to use?

What is the TSM password for this node?

Contact the TSM Server to validate password

< Back Next > Cancel Help

TSM Scheduler Wizard [X]

Service login options

Which account should the service use when logging onto Windows NT?

The System account

This account:

 Password:

 Confirm Password:

When do you want the service to start?

Manually when I explicitly start the service

Automatically when Windows boots

< Back Next > Cancel Help

TSM Scheduler Wizard [X]

Log file names and locations

Specify the client schedule log file that should be used

Browse

Specify the client error log file that should be used

Browse

Enable event logging

< Back Next > Cancel Help

